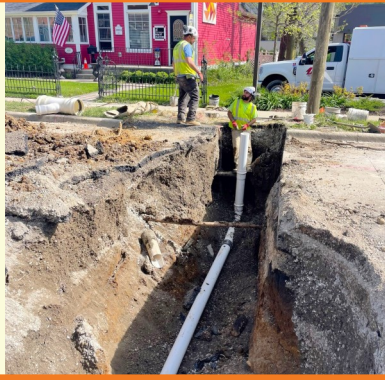


FRIDAY, MAY 3, 2024



PROGRESS MADE THIS WEEK MONDAY-FRIDAY [04.29-05.03]

- ◆ Curb removal along Pennsylvania [Main to Park]
- ◆ Light pole foundations on Pennsylvania [Western to Prospect]
- ◆ Storm and sanitary sewer work on Pennsylvania, Crescent and Glenwood

WORK ANTICIPATED NEXT WEEK MONDAY-FRIDAY [05.06-05.10]

- ◆ Roadway excavation along Pennsylvania's south side [Main to Park]
- ◆ Light pole foundations on Pennsylvania [Western to Prospect]
- ◆ Any remaining storm sewer work on Pennsylvania [Western to Prospect]
- ◆ Miscellaneous electrical work in Schock Square

DETOUR INFORMATION

Pennsylvania [Forest to Park] is currently ONE-WAY WESTBOUND.

The detour route map is on the back side of this flyer.

ALL businesses and pedestrian access remain open.

OTHER IMPORTANT INFORMATION

- ◆ There will be driveway access interruptions with Pennsylvania's excavation work; *be alert for notices from the construction team.*
- ◆ Please drive cautiously and obey speed limits in the construction zone.
- ◆ *If you ever have questions/concerns regarding the project, please reach out to a contact listed below.*



downtownge.com



Clay Keller, P.E.
Meredith Hannah



630-936-9456
630-547-5345



pkeller@bla-inc.com
mhannah@glenellyn.org





BLUE AREAS INDICATE NEARBY PARKING LOTS WITH SHORT-TERM CUSTOMER PARKING FOR MORE INFO, VISIT: GLENELLYN.ORG/PARKING

	CONSTRUCTION WORK ZONES		PARKING ENTRANCE
	EB PENNSYLVANIA DETOUR		CHANGE TO ONE-WAY

