

FRIDAY, APRIL 19, 2024



PROGRESS MADE THIS WEEK MONDAY-FRIDAY [04.15-04.19]

- ◆ Water services along Pennsylvania
- ◆ Water service connections at Forest's south leg and Pennsylvania
- ◆ Storm sewer work along Pennsylvania [between Main and Park]

WORK ANTICIPATED NEXT WEEK MONDAY-FRIDAY [04.22-04.26]

- ◆ Pennsylvania [Main to Park]
 - ⇒ Water service connections
 - ⇒ Watermain connections [Forest intersection, north and east legs]
 - ⇒ Storm sewer
- ◆ Pennsylvania [Western to Prospect]
 - ⇒ Sanitary sewer service connections
 - ⇒ Storm sewer [Western intersection]
 - ⇒ Street light foundation work

DETOUR INFORMATION

Pennsylvania [Forest to Park] is currently ONE-WAY WESTBOUND.

The detour route map is on the back side of this flyer.

ALL businesses and pedestrian access remain open.

OTHER IMPORTANT INFORMATION

- ◆ As work begins on Pennsylvania west of Prospect, traffic remains two-way, but traffic patterns will change with the work; *be alert for flaggers.*
- ◆ Please drive with caution as the Pennsylvania/Forest intersection work may cause some congestion.
- ◆ *If you ever have questions/concerns regarding the project, please reach out to a contact listed below.*



downtownge.com



Clay Keller, P.E.
Meredith Hannah

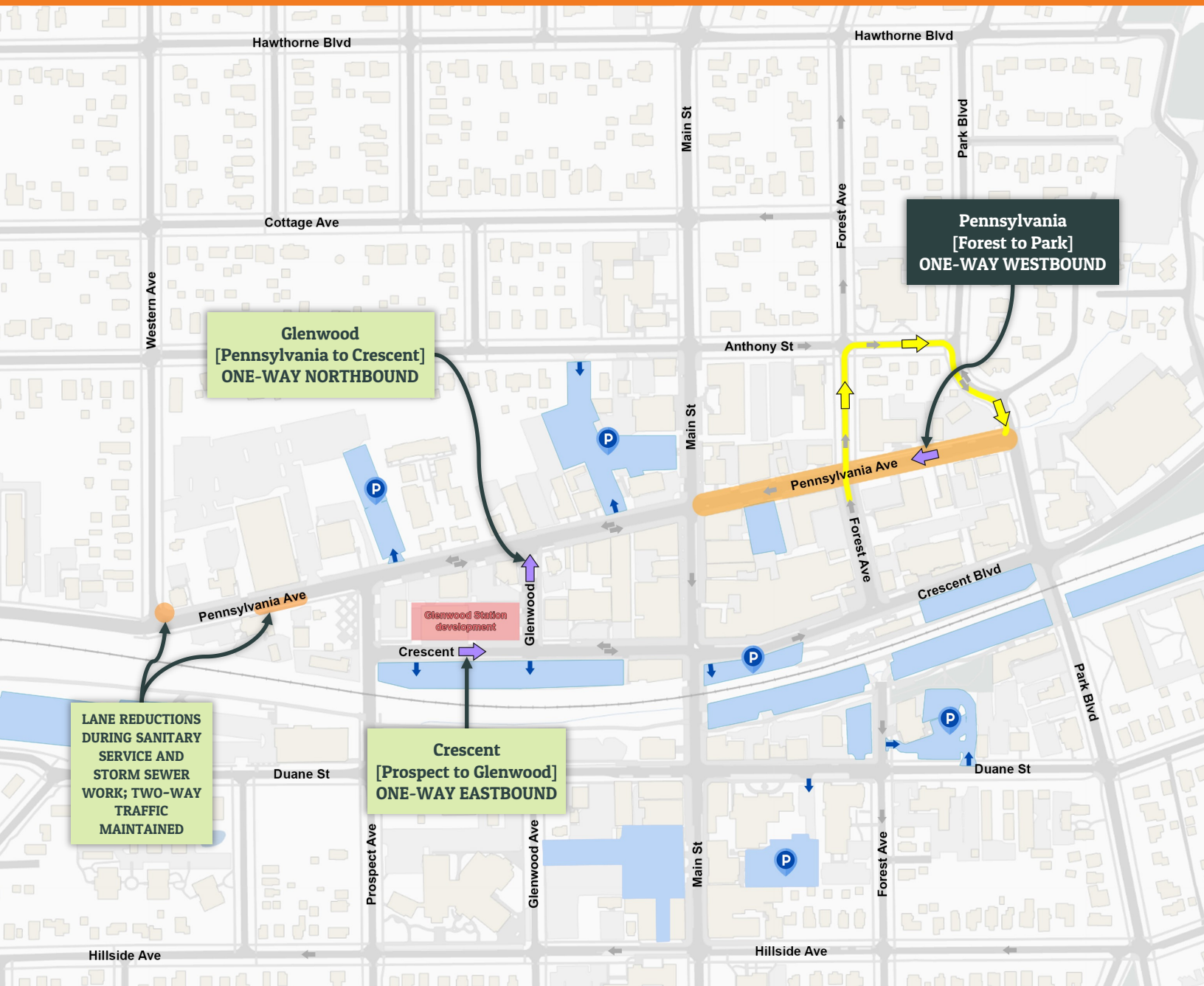


630-936-9456
630-547-5345



pkeller@bla-inc.com
mhannah@glenellyn.org





BLUE AREAS INDICATE NEARBY PARKING LOTS WITH SHORT-TERM CUSTOMER PARKING FOR MORE INFO, VISIT: GLENELLYN.ORG/PARKING

	CONSTRUCTION WORK ZONES		PARKING ENTRANCE
	EB PENNSYLVANIA DETOUR		CHANGE TO ONE-WAY

