

FRIDAY, APRIL 12, 2024



PROGRESS MADE THIS WEEK MONDAY-FRIDAY [04.08-04.12]

- ◆ Temporary striping refresh along Pennsylvania and Crescent
- ◆ Water services along Pennsylvania
- ◆ Storm sewer elliptical installation along Pennsylvania [starting at Park and working west]

WORK ANTICIPATED NEXT WEEK MONDAY-FRIDAY [04.15-04.19]

- ◆ Watermain connection on Forest between Pennsylvania and Crescent
- ◆ Water services along Pennsylvania
- ◆ Storm sewer work continues along Pennsylvania
- ◆ Potential street light foundation work on Pennsylvania between Prospect and Western

DETOUR INFORMATION

Temporary northbound Forest closures [coming from Crescent] will occur next week; tentatively Tuesday and Wednesday, April 16 and 17.

Pennsylvania [Forest to Park] is currently ONE-WAY WESTBOUND.

The detour route map is on the back side of this flyer.

ALL businesses and pedestrian access remain open.

OTHER IMPORTANT INFORMATION

- ◆ Please drive with caution as the Pennsylvania/Forest intersection work may cause some congestion.
- ◆ With water service work continuing, expect a visit from a member of the construction team to answer questions/discuss possible outages.
- ◆ If you ever have questions/concerns regarding the project, please reach out to a contact listed below.



downtownge.com



Clay Keller, P.E.
Meredith Hannah

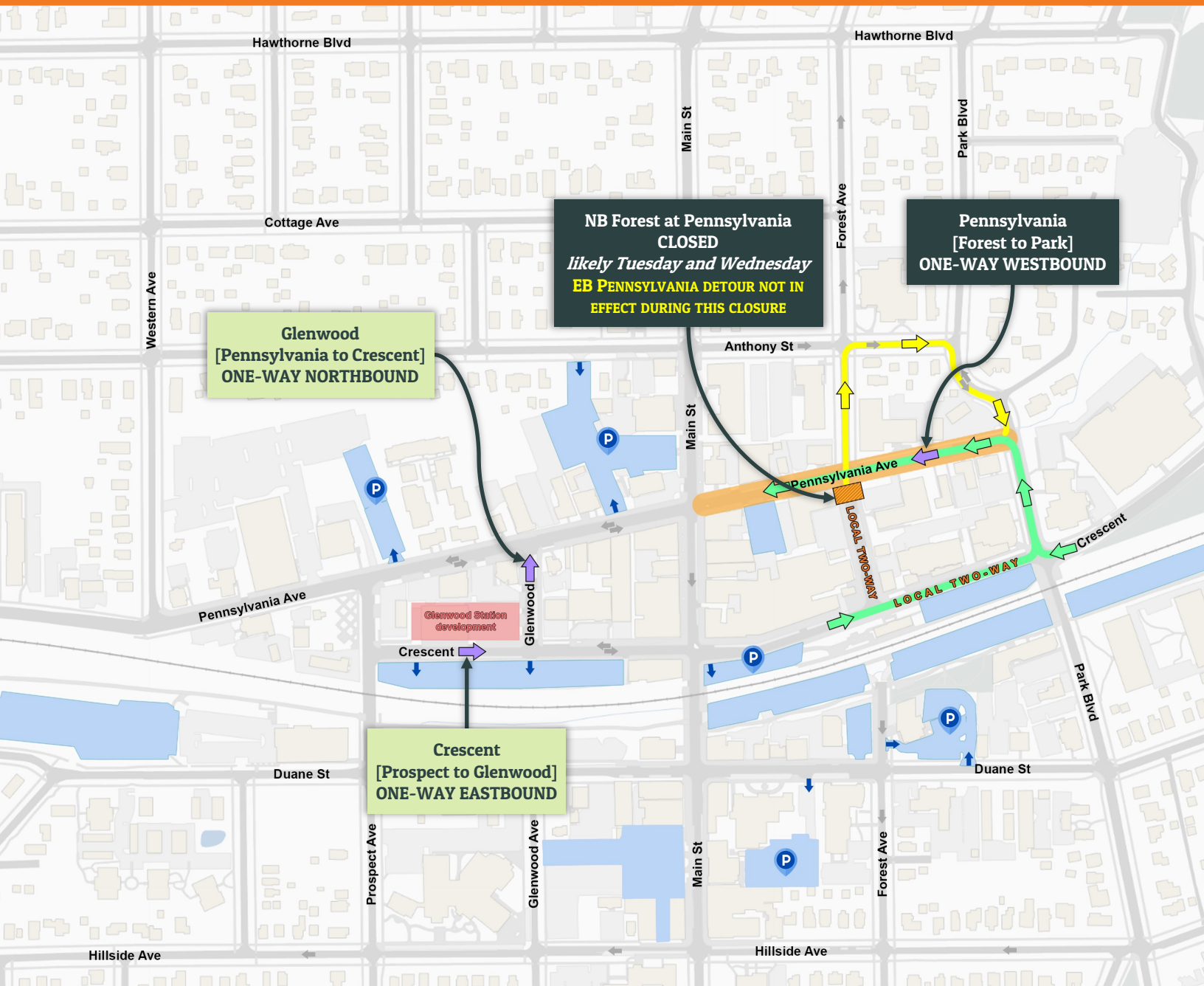


630-936-9456
630-547-5345



pkeller@bla-inc.com
mhannah@glenellyn.org





BLUE AREAS INDICATE NEARBY PARKING LOTS WITH SHORT-TERM CUSTOMER PARKING FOR MORE INFO, VISIT: GLENELLYN.ORG/PARKING

	CONSTRUCTION WORK ZONES		ROAD CLOSED		PARKING ENTRANCE
	EB PENNSYLVANIA DETOUR		FOREST DETOUR		CHANGE TO ONE-WAY

