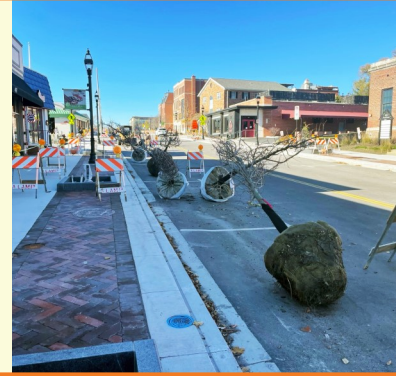
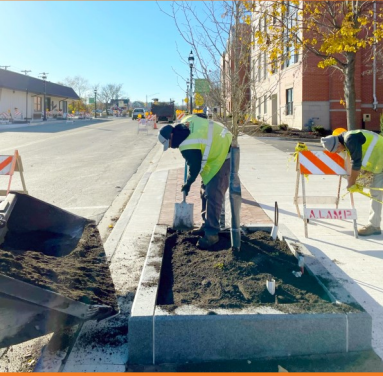


FRIDAY, NOVEMBER 17, 2023



PROGRESS MADE THIS WEEK MONDAY-FRIDAY [11.13-11.17]

- ◆ Completed granite curbs
- ◆ Installed all trees along Pennsylvania and Crescent
- ◆ Placed temporary striping on Crescent
- ◆ Nicor continued gas service work on Pennsylvania and Forest

WORK ANTICIPATED NEXT WEEK MONDAY-WEDNESDAY [11.20-11.22]

- ◆ Limestone caps on remaining seat walls
- ◆ Miscellaneous site cleanup
- ◆ Nicor gas service work and restoration

*Happy Thanksgiving!
Have a safe and
wonderful holiday with
your loved ones!*



DETOUR INFORMATION

Main [Pennsylvania to Crescent] is open to traffic.

Main [Anthony to Pennsylvania] is two-way.

Crescent [Glenwood to Main] is TWO-WAY.

Pennsylvania [Main to Prospect] is two-way.

ALL businesses and pedestrian access remain open.

OTHER IMPORTANT INFORMATION

- ◆ Crescent [Glenwood to Main] opens to two-way traffic end of day Friday, November 17.
- ◆ Nicor gas service work will continue next week; *they hope to complete restoration before Thanksgiving.*
- ◆ Expect parking closures as tree lighting is placed along Crescent and Pennsylvania.



downtownge.com



Clay Keller, P.E.
Meredith Hannah



630-936-9456
630-547-5345



pkeller@bla-inc.com
mhannah@glenellyn.org





**BLUE AREAS INDICATE NEARBY
SHORT-TERM CUSTOMER PARKING**

**CONSTRUCTION
WORK ZONES**

**CHANGE TO
ONE-WAY**

**PARKING
ENTRANCE**