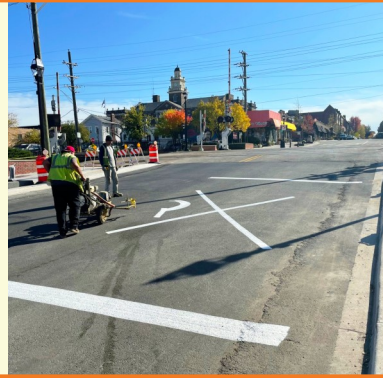


FRIDAY, OCTOBER 27, 2023



PROGRESS MADE THIS WEEK MONDAY-FRIDAY [10.23-10.27]

- ♦ Granite curb on Main's north block
- ♦ Trees on Main's south block
- ♦ Bricks along Crescent
- ♦ Miscellaneous electrical work throughout the project
- ♦ Nicor gas work at Crescent and Park

WORK ANTICIPATED NEXT WEEK MONDAY-FRIDAY [10.30-11.03]

- ♦ Granite curb installation continues
- ♦ Trees on Main's north block, weather permitting
- ♦ Underground work on Prospect and Pennsylvania begins
- ♦ Nicor gas main to be livened and services to begin

DETOUR INFORMATION

Main [Pennsylvania to Crescent] opens to traffic by end of day Friday, October 27.

Main [Anthony to Pennsylvania] is ONE-WAY SOUTH.

Crescent [Prospect to Main] is ONE-WAY EAST.

Pennsylvania [Main to Prospect] is ONE-WAY WEST.

ALL businesses and pedestrian access remain open.

OTHER IMPORTANT INFORMATION

- ♦ Utility work on Prospect [north of the tracks] and Pennsylvania [west of Prospect] begins **Monday, October 30** and is expected to take **two weeks**.
- ♦ **For only one day [Monday, October 30], Prospect [Pennsylvania to Duane] will be closed to southbound traffic; Pennsylvania [Prospect to Main] will open to two-way traffic to accommodate the temporary closure; the closure will be lifted by end of day.**



downtownge.com



Clay Keller, P.E.
Meredith Hannah



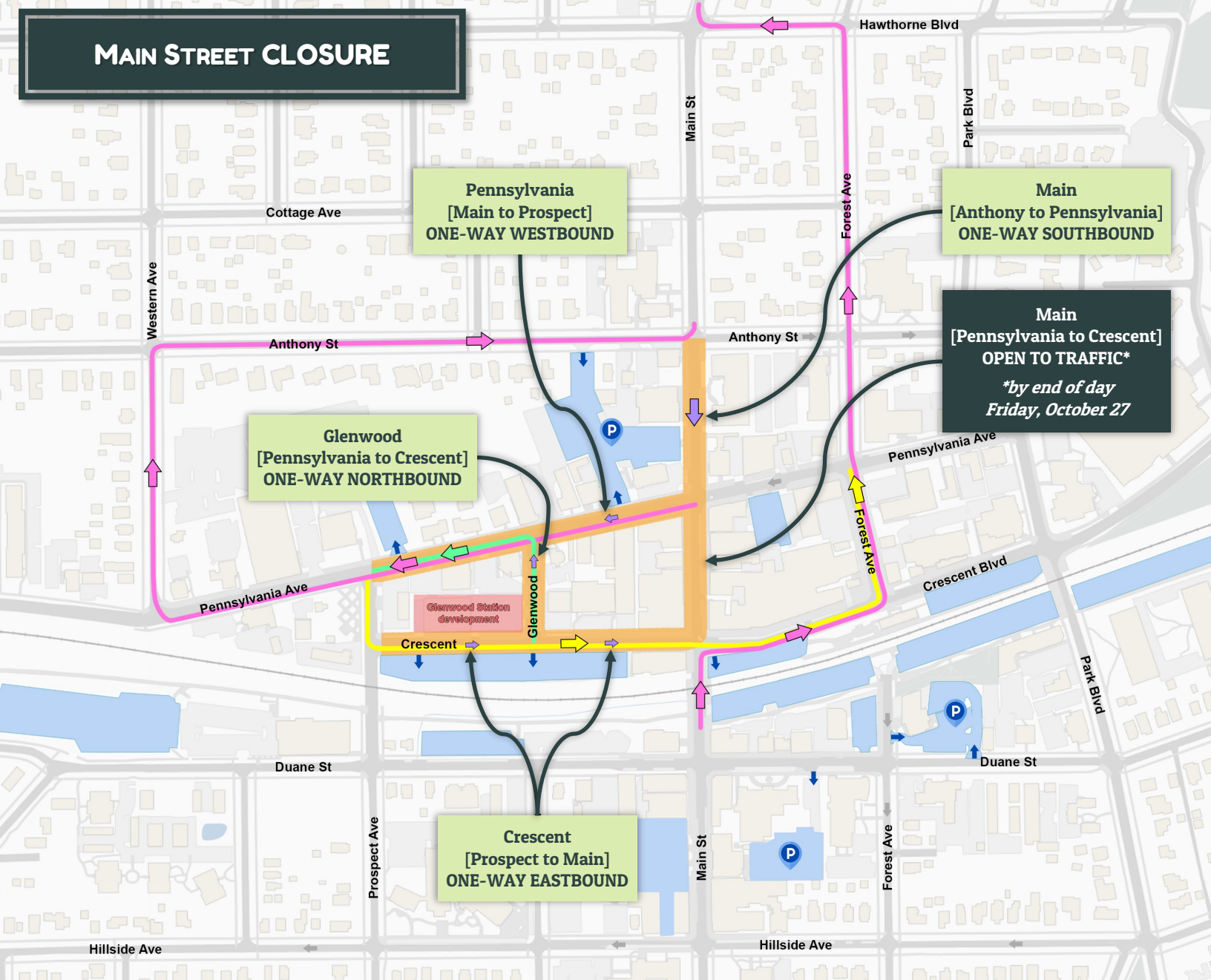
630-936-9456
630-547-5345



pkeller@bla-inc.com
mhannah@glenellyn.org



MAIN STREET CLOSURE



BLUE AREAS INDICATE NEARBY SHORT-TERM CUSTOMER PARKING

ROAD CLOSED TO TRAFFIC

CONSTRUCTION WORK ZONES

CHANGE TO ONE-WAY

PARKING ENTRANCE

NB MAIN

SB MAIN

EB PENNSYLVANIA

WB CRESCENT