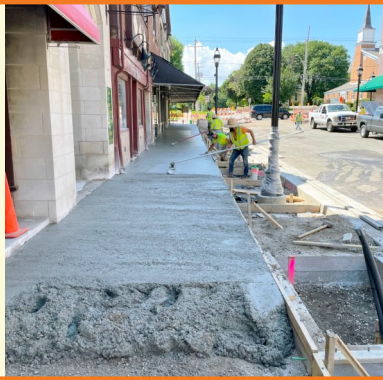


FRIDAY, AUGUST 5, 2022



PROGRESS MADE THIS WEEK MONDAY-SATURDAY [08.01-08.06]

- ◆ Poured sidewalk and concrete base course for brick pavers along Main and Duane
- ◆ Began granite curb installation along Main

WORK ANTICIPATED NEXT WEEK MONDAY-FRIDAY [08.08-08.12]

- ◆ Granite curb installation continues
- ◆ Seat wall work and brick paver installation begin
- ◆ Irrigation work is tentative
- ◆ Utility undergrounding work begins on Hillside

WEEKLY ZOOM
OPEN HOUSE

THURSDAYS
8:30AM - 9:30AM

[HTTPS://ZOOM.US/JOIN](https://zoom.us/join)
ID: 813 2131 4680; CODE: 576326

DETOUR INFORMATION

ONE-WAY EASTBOUND traffic on Duane extends from Prospect to Forest. *The parking garage remains accessible to vehicles traveling eastbound. Please notice the additional wayfinding signage.*

Main Street is CLOSED to traffic between Hillside Avenue and Duane Street.

Pedestrian routes remain fully accessible. *Please see the detour map on the back of this flyer.*

OTHER IMPORTANT INFORMATION

- ◆ Main Street opens to ONE-WAY NORTHBOUND traffic late next week; *street parking along Main is prohibited during working hours, but allowed when no work is ongoing.*
- ◆ Work on Duane's north side is anticipated to begin the week of August 22nd.
- ◆ *Please remember to drive and park safely while visiting downtown Glen Ellyn businesses.*



downtownge.com



Clay Keller, P.E.
Meredith Hannah

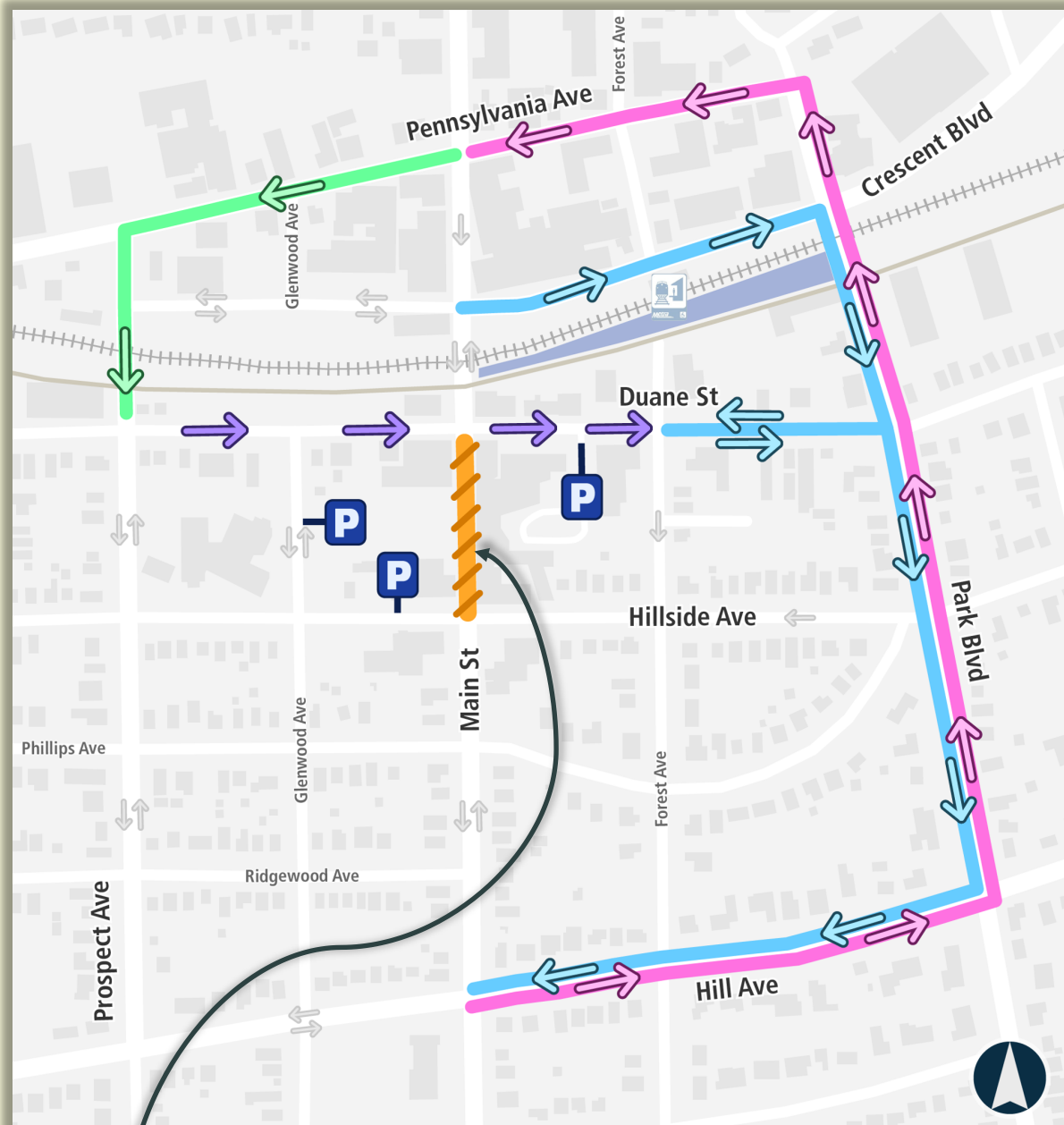


630-936-9456
630-547-5345



pkeller@bla-inc.com
mhannah@glenellyn.org





soon, Main Street will be open to
NORTHBOUND-ONLY traffic

— Main St SB
— Main St NB
— Duane St WB

Road Closed
 Parking Garage Entrance

Direction of Detour Travel
 Change to One-Way Travel

