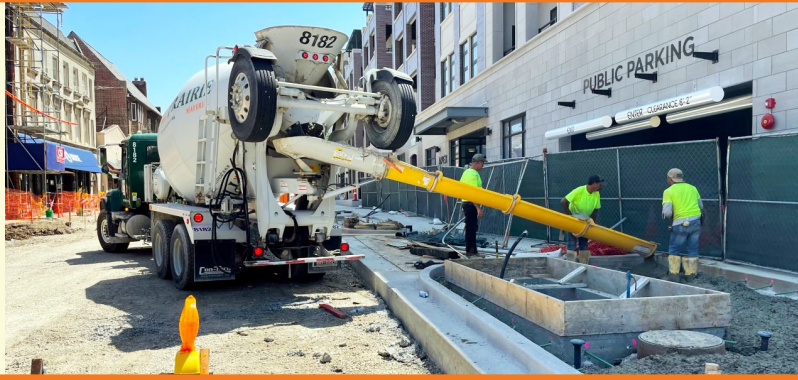


FRIDAY, JUNE 17, 2022



PROGRESS MADE THIS WEEK MONDAY-FRIDAY [06.13-06.17]

- ◆ Roadway excavation on Duane
- ◆ Excavation for seat walls and soil cells on Main
- ◆ Apex concrete work near entrance on Main

WEEKLY ZOOM OPEN HOUSE
THURSDAYS
8:30AM - 9:30AM

[HTTPS://ZOOM.US/JOIN](https://zoom.us/join)
ID: 813 2131 4680
CODE: 576326

WORK ANTICIPATED NEXT WEEK MONDAY-FRIDAY [06.20-06.24]

- ◆ Finish roadway excavation on Duane
- ◆ Frame and pour curb on Duane and Main
- ◆ Pour sidewalk and driveways on the west end of Duane
- ◆ Install electrical and irrigation conduit on Main

DETOUR INFORMATION

ONE-WAY EASTBOUND traffic on Duane extends from Prospect to Forest. **The parking garage remains accessible to vehicles driving eastbound. Additional wayfinding signage will be coming soon.**

Please see the detour map on the back of this flyer.
Main Street is CLOSED to traffic between Hillside Avenue and Duane Street. Pedestrian routes remain fully accessible.

OTHER IMPORTANT INFORMATION

- ◆ Concrete work requires driveway access disruptions; advance notice will be provided and access will be reopened as soon as possible. *Thank you for your patience!*
- ◆ If you have any special deliveries or issues with delivery access and/or trash pickup, *please reach out to Clay directly (see Clay's contact information at the bottom of this page).*
- ◆ *Where signed, parking is allowed on the north side of Duane between Main and Forest.*



downtownge.com



Tom Topor, P.E.
Clay Keller, P.E.
Meredith Hannah

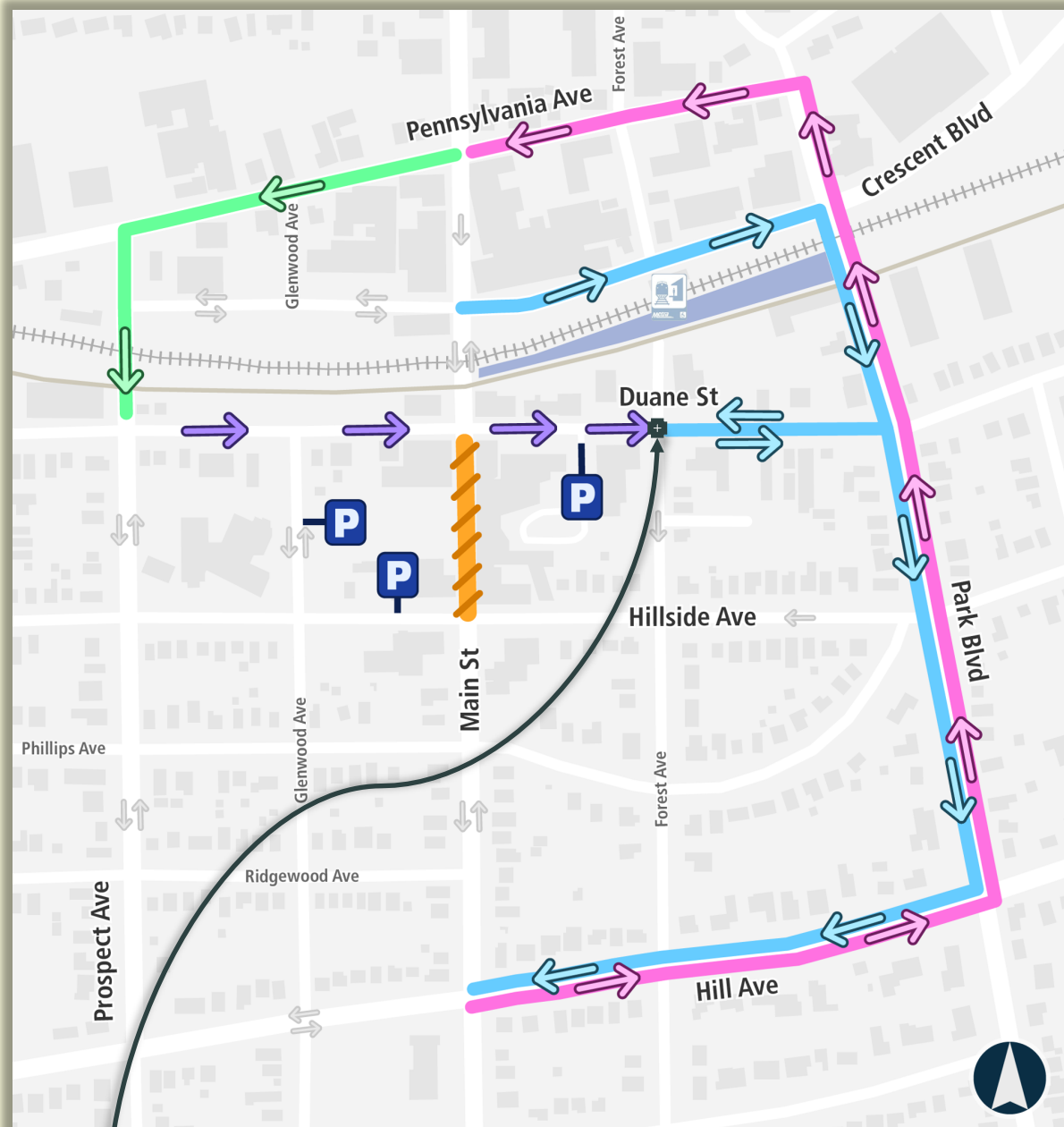


630-547-5520
630-936-9456
630-547-5345



ttopor@glenellyn.org
pkeller@bla-inc.com
mhannah@glenellyn.org





ONE-WAY-ONLY traffic
on Duane extends to
Forest Avenue

— Main St SB
— Main St NB
— Duane St WB

||||| Road Closed

P Parking Garage
Entrance

↔ Direction of
Detour Travel

→ Change to One-
Way Travel