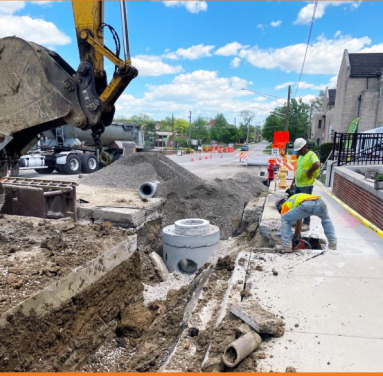


FRIDAY, MAY 20, 2022



PROGRESS MADE THIS WEEK MONDAY-FRIDAY [05.16-05.20]

- ◆ Storm, sanitary and water work on Duane
- ◆ AT&T relocation and Apex sidewalk work on Main

GLEN ELLYN IS OFFERING
WINDOW CLEANING SERVICES* FOR
DUANE/MAIN/HILLSIDE BUSINESSES
FACING THE CONSTRUCTION ZONES

*LET US KNOW IF YOU ARE **NOT** INTERESTED

WORK ANTICIPATED NEXT WEEK MONDAY-FRIDAY [05.23-05.27]

- ◆ *Duane (Main to Forest) water shutdown Monday, May 23, 7am-9am*
- ◆ Storm sewer work on Main (Duane to tracks)
- ◆ Underground utility work on Duane continues
- ◆ AT&T relocation work continues

WEEKLY ZOOM OPEN HOUSE
THURSDAYS
8:30AM - 9:30AM

[HTTPS://ZOOM.US/JOIN](https://zoom.us/join)
ID: 813 2131 4680
CODE: 576326

DETOUR INFORMATION

*Tuesday, May 24 through Thursday, May 26: Main Street will be **CLOSED** from Crescent to Duane; please see the detour map on the back of this flyer and follow the detour signage.*

Main is **CLOSED** between Hillside and Duane; Duane is ONE-WAY EASTBOUND between Prospect and the Civic Center parking garage. Pedestrian routes remain fully accessible.

OTHER IMPORTANT INFORMATION

- ◆ Water shutdowns for sanitary and water work on Duane east of Main will be coordinated with each business as practically feasible.
- ◆ Street parking on Duane is available but restricted during working hours—*please park in the direction of travel*; public parking garage use is highly recommended.



downtownge.com



Tom Topor, P.E.
Clay Keller, P.E.
Meredith Hannah

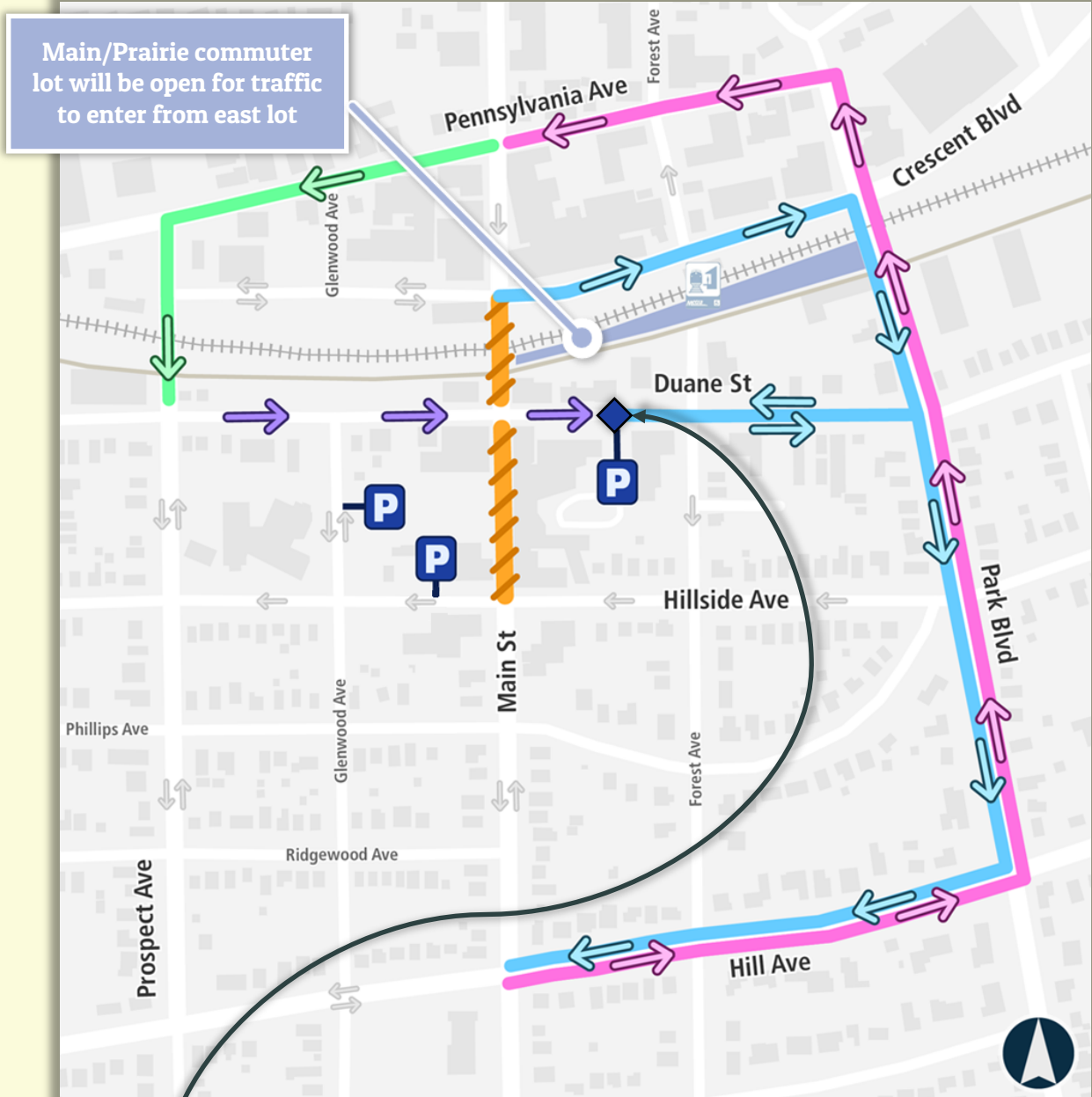


630-547-5520
630-936-9456
630-547-5345







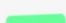


ttopor@glenellyn.org
pkeller@bla-inc.com
mhannah@glenellyn.org





ONE-WAY-ONLY traffic on Duane extends to the Civic Center parking garage

 Main St SB	 Road Closed	 Direction of Detour Travel
 Main St NB	 Parking Garage Entrance	 Change to One-Way Travel
 Duane St WB		

