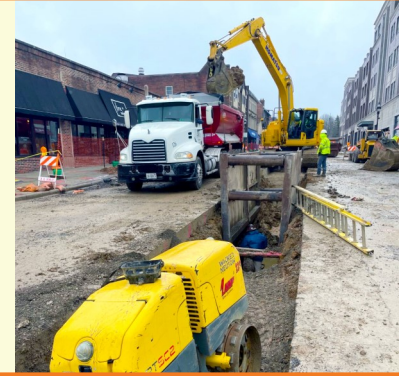


### FRIDAY, MARCH 25, 2022



#### PROGRESS MADE THIS WEEK MONDAY-FRIDAY [03.21-03.25]

- ◆ Gas work at Main/Duane and on Duane
- ◆ Sawcutting for utilities on Main
- ◆ Sanitary main installation began at Main/Duane
- ◆ Concrete work along the Apex building, north side of Hillside

#### WORK ANTICIPATED NEXT WEEK MONDAY-FRIDAY [03.28-04.01]

- ◆ Gas work continues on Duane
- ◆ Sanitary main installation continues on Main
- ◆ Temporary lighting installation on Duane
- ◆ *Watermain work tentative*

**WEEKLY OPEN HOUSE ZOOM MEETING**  
EVERY THURSDAY, 8:30AM - 9:30AM

[HTTPS://US02WEB.ZOOM.US/J/81321314680?](https://us02web.zoom.us/j/81321314680?pwd=WGd1UTHuZEppQUt3THNVVGNSR2dDdz09)  
[PWD=WGd1UTHuZEppQUt3THNVVGNSR2dDdz09](https://us02web.zoom.us/j/81321314680?pwd=WGd1UTHuZEppQUt3THNVVGNSR2dDdz09)  
**MEETING ID: 813 2131 4680; CODE: 576326**

#### DETOUR INFORMATION

Main Street is **CLOSED** to traffic between Hillside Avenue and Duane Street; Duane Street is **ONE-WAY EASTBOUND** between Prospect Avenue and Main Street. Pedestrian routes remain fully accessible.

*The back of this flyer has a detour route map; other maps and more information can be found on the project website.*

#### OTHER IMPORTANT INFORMATION

- ◆ *Expect temporary daytime street parking restrictions to accommodate work; street parking is available on Duane between Main and Forest.*
- ◆ Public parking garage use is highly recommended.
- ◆ Apex garage parking is accessible from Glenwood; it is expected to be accessible from Hillside April 1.
- ◆ Loading Zone signage is in place at Main/Duane; Hillside will remain open for deliveries.



# downtownge.com



Tom Topor, P.E.  
Clay Keller, P.E.  
Meredith Hannah

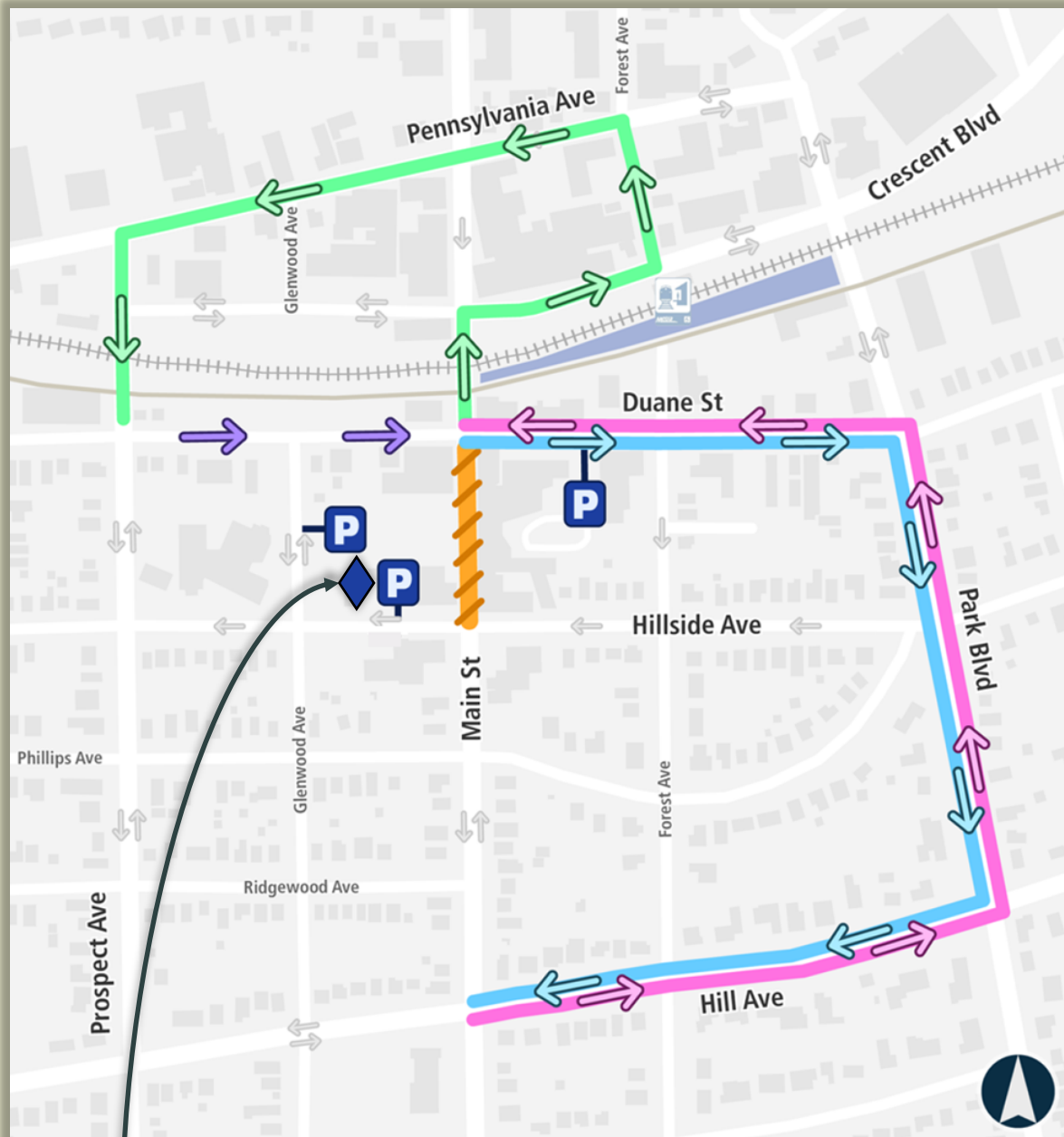


630-547-5520  
630-936-9456  
630-547-5345



ttopor@glenellyn.org  
pkeller@bla-inc.com  
mhannah@glenellyn.org





Apex garage parking is accessible from Glenwood; it is expected to be accessible from Hillside April 1.

- |             |                         |                            |
|-------------|-------------------------|----------------------------|
| Main St SB  | Road Closed             | Direction of Detour Travel |
| Main St NB  | Parking Garage Entrance | Change to One-Way Travel   |
| Duane St WB |                         |                            |

