

Standard Concrete



Material Choice	Pros	Cons
Plain Broom Finished Concrete	Lowest cost option Easiest to install correctly Standard snowplow equipment Unobtrusive aesthetic Allows other elements to shine	Limited options for design Uninspiring appearance Some cracking possible Concrete can spall and flake

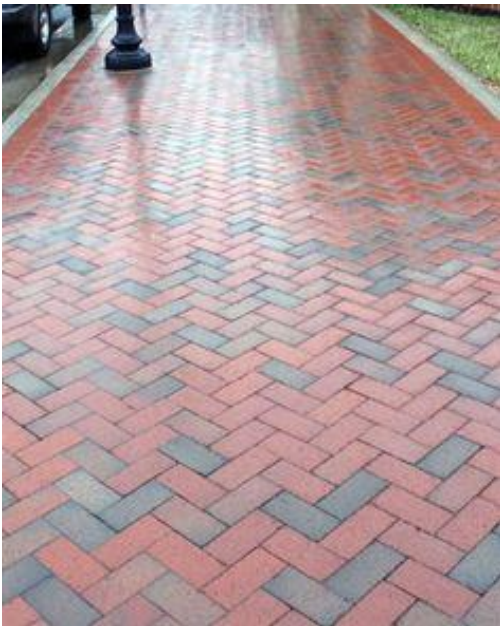
Fired Clay Brick Paving | Pros and Cons

Pros

- Historic material with rich colors and textures
- Classic look that never goes out of style
- Extremely durable and low maintenance
- Fired clay brick does not fade over time
- Pavers can be re-set after repairs

Cons

- High installation costs/skills compared to cast-in-place pavement
- Limited sizes/shapes and colors
- Robust detailing and reinforcement needed to ensure a durable and stable installation



Clay Fired Brick Paving | Maintenance / Costs

- \$24 / SF construction cost (on a concrete slab)
- Will not fade
- Does not need to be sealed
- Snow removal requires rubber tipped plows or skids (for truck mounted equipment)
- Maintenance over time
 - Power washing
 - Spot repairs to cracked pavers
 - Joint sand replacement
 - Service life can last for generations



River St, Batavia during construction

Exposed Aggregate | Pros / Cons

Pros

- Textures and colors are highly customizable
- Low installation cost relative to brick pavers (\$14 / SF)



Exposed Aggregate | Pros / Cons

Cons

- Colors and textures are very hard to recreate for future repairs
- Requires highly skilled labor to install correctly, and only one chance to get right
- Concrete slabs will crack, so scoring pattern must become a part of the design
- Extremely susceptible to damage from salt/deicing agents – requires regular sealing
- Minimal aesthetic value and benefit compared to more historic material options
- Village experienced long lead time when obtaining aggregates for Fall 2019 mock-ups



Stamped Colored Concrete



Material Choice	Pros	Cons
Stamped Colored Concrete	Lower cost than brick Decorative aesthetic Unique and custom patterns Wide range of colors/finishes Creative opportunities	Requires high skilled contractor Special snowplowing equipment Color may fade over time Some cracking possible

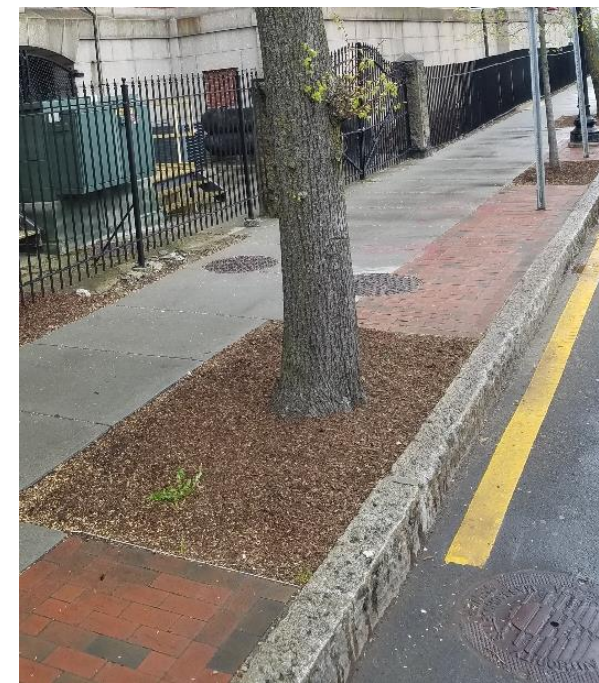
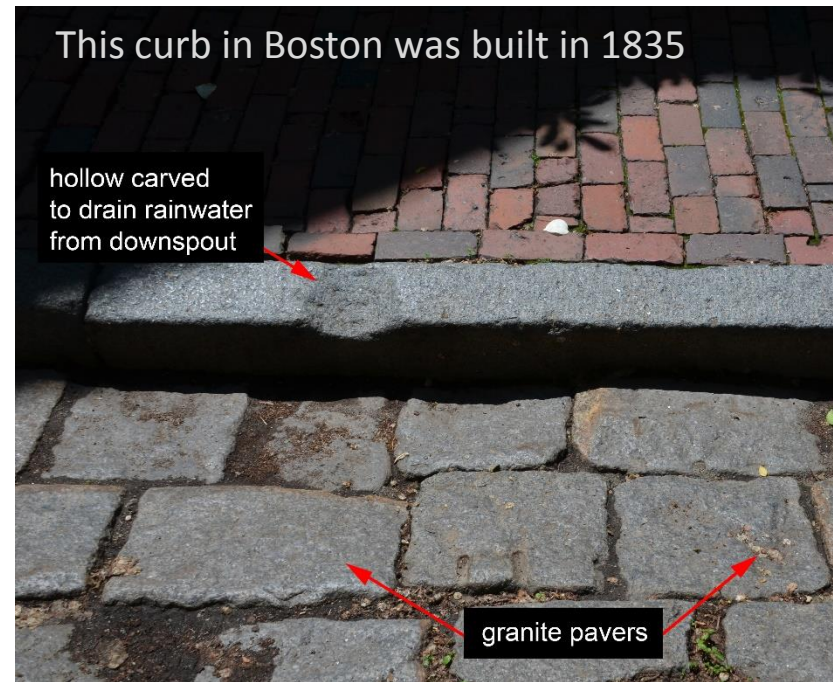
Planter Curb Material | Granite

Pros

- Durable – granite curbs in Washington DC and Boston have been in use for generations
- Classic, elegant aesthetic that communicates a feeling of permanence
- Very low maintenance

Cons

- Expensive material - \$70/LF for a 6" curb



Planter Curb Material | Cast-in-place Concrete

Pros

- Low cost - \$25/LF for a 6" curb
- Simple and functional
- Can look very nice if installed correctly
- No maintenance



Cons

- Quality is dependent on installer's experience
- Minimal aesthetic value
- Cracking can be hard to control
- Corners can be damaged and chipped

